
KIT PART NUMBER 1813005
INSTRUCTIONS FOR INSTALLING ALUMINUM PRICE RAILS ON
6 -WIDE MERCHANT MACHINES.

CHECK THE PARTS RECEIVED IN THIS KIT WITH THE PARTS LIST IN THESE INSTRUCTIONS. IF ANY PARTS ARE MISSING CONTACT THE CRANE MERCHANDISING SYSTEMS' PARTS DEPARTMENT AT 1-800-621-7278.

Read these instructions carefully before installing the kit.
Keep these instructions for part numbers and for future reference.

THIS KIT CONTAINS THE FOLLOWING:

PART NUMBER	DESCRIPTION	QTY
1813004	INSTRUCTIONS, PRICE RAIL INSTALLATION	1
1817056	PRC RL/HLDR ASM 6 SEL AL	1
2222031	TEE BOLT-TRIM	3
9900081	NUT #8-32 KEPS ZINC PLATE	3
AP420186	SLOT HEX.WASHER HD.DRILL SCR.6	2

Price Rail Can Be Installed with T-Bolts or Self Drilling Screws

Method 1

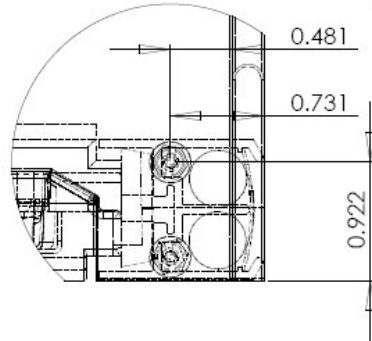
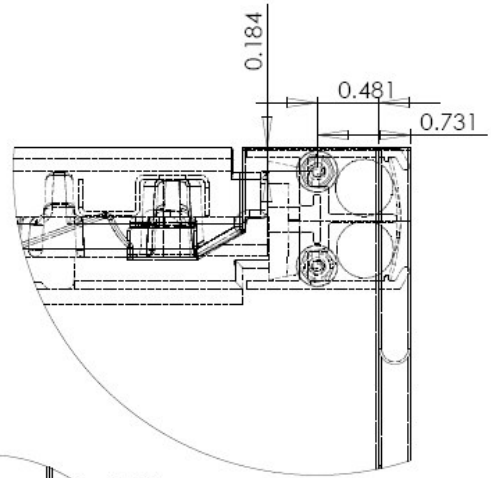
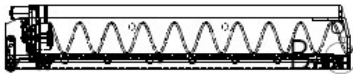
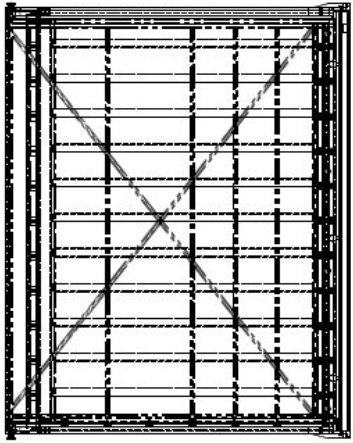
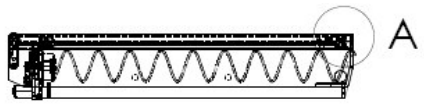
T-Bolt Method

1. Place the 3 T-Bolts in the rear track of price rail.
2. Place price rail on front of tray; pushing the threaded shaft of T-Bolts into holes on the front of lip the tray.
3. Hand start the Keps nuts on T-Bolt. Finish tightening with an 11/32" open ended wrench.

Method 2

Self Drilling Screw Method

1. Locate screws as shown in schematic below. The screws are installed through opposite sides of the tray and screws hold the price rail back against the tray.
2. One screw is installed into the upper half of the price rail and the other is installed in the lower half of the price rail. Place the screw on one side of the tray 0.73" from the front of the tray and 0.92" from the bottom of the tray.
3. On the other side of the tray, place the screw 0.73" from the front of the tray and 0.18" from the bottom of the tray.



DETAIL A
SCALE 1 : 1

DETAIL B
SCALE 1 : 1

